



SOLID
&

SHAPE

DESSO

STUDIO
STEFAN

SCHOLTEN

 Tarkett

Over the past twenty years, Stefan Scholten has become one of the defining voices in world-renowned Dutch design. The prestigious design magazine *Wallpaper** recently voted his work 'Best Design of the Year'. He has managed his own design agency since 1995. The Amsterdam-based studio designs for a variety of well-respected brands, such as HAY, Paola Lenti, City of Amsterdam, DESSO, Maharam, Kvadrat and Gelderland.

Scholten has many years of experience in designing furniture, textiles and, since October 2021, he has also been the new Creative Director for wallpaper producer BN Walls. He is known for his reduced shapes and minimalist design style combined with a unique use of colour. His designs are functional and applicable, but always expressive. Scholten's approach is also known as the atelier-method-of-working. During the design process, he thinks with his hands as much as possible. He will keep on sketching, drawing and mixing colours until an original and new design emerges. Before an item of furniture, wallpaper, textile or home accessory goes into large-scale production, the studio first works on a scale or life-size model, typically using basic materials, such as paper or cardboard.



Stefan Scholten



SOLID 2962, SHAPE 9027



In addition to designing the tiles, Studio Stefan Scholten also took the creative lead in compiling the content for this collection magazine. This included graphic design, art direction and styling in close collaboration with photographer Pim Top to give it an abstract image. By using mainly furniture and products designed by Studio Stefan Scholten and Scholten & Baijings, a glimpse is given into the world of the designer.

DESSO is a leading carpet brand with more than 85 years of experience in manufacturing high-end, innovative carpet solutions. DESSO is part of Tarkett, a world leader in flooring. Our carpet manufacturing facilities are located in Waalwijk, the Netherlands and Dendermonde, Belgium.

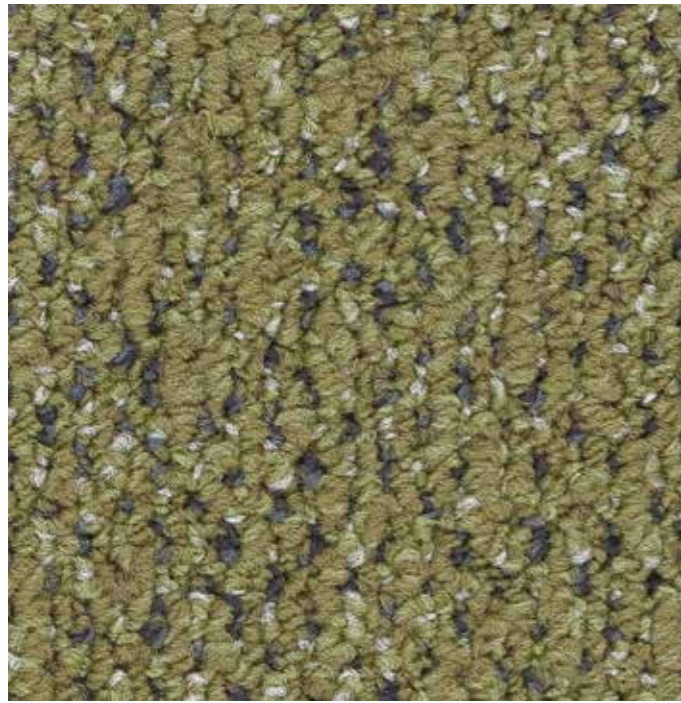
Through an innovation strategy, driven by the three pillars of Creativity, Functionality and Cradle to Cradle® design, we aim to deliver products which help to maximize people's health and wellbeing. With inventive patterns and an extensive offering of fresh colour palettes, DESSO carpet tiles create stunning and practical concepts for every space within a building.

At Tarkett, our closed-loop systems do away with linear take-make-waste models, ensuring that what goes around, comes around. For us, circularity is about the beauty of the used and reused materials that go into our products, the innovative manufacturing processes and the knowledge that we are actively cutting down on waste and greenhouse gas emissions.

We seek to bring added value to our collections through external collaborations like this one with Studio Stefan Scholten.

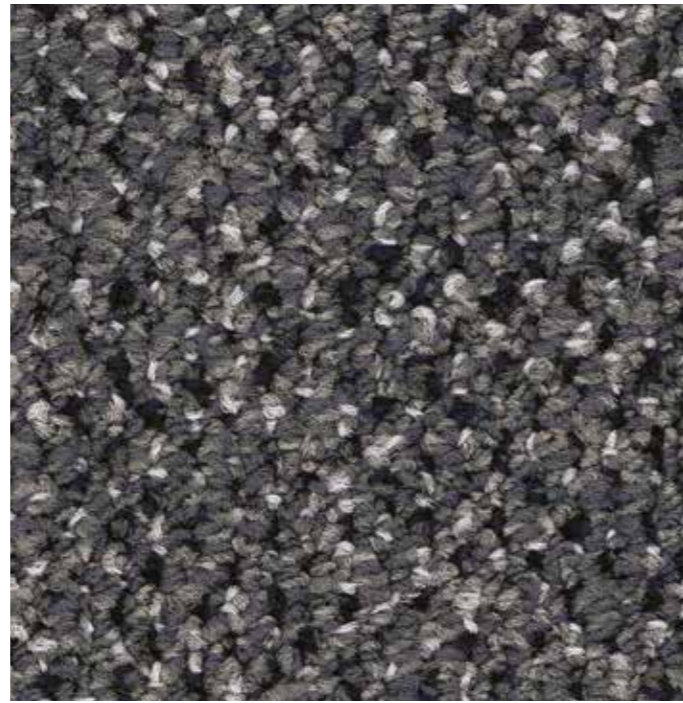


“Studio Stefan Scholten is known for its refined use of colour and subtle sense of shape and materiality.”
— Ludwig Cammaert



SOLID 7854
PAGE 34, 35, 50, 51

SHAPE 7854
PAGE 14



SOLID 9022
PAGE 49, 51

SHAPE 9022
PAGE 38



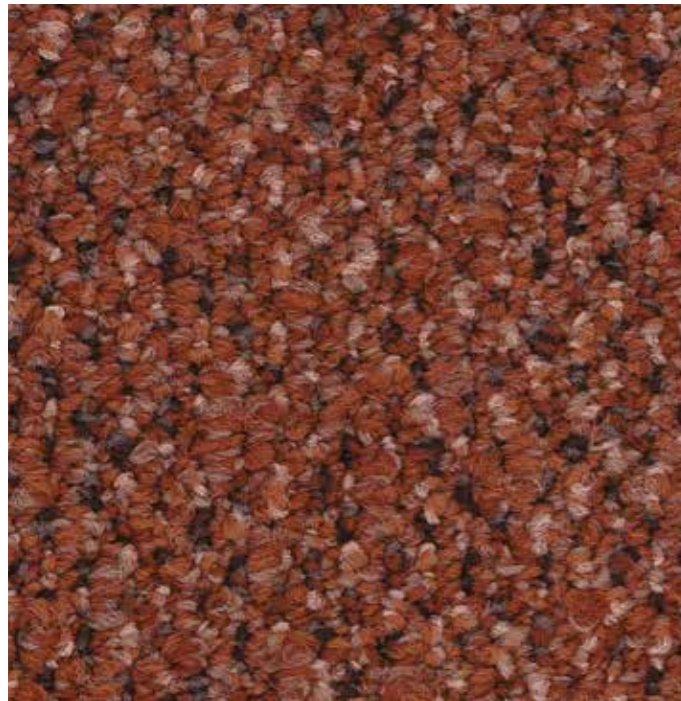
SOLID 9027
PAGE 48, 49, 51

SHAPE 9027
PAGE 05, 36, 37



SOLID 6324
PAGE 16, 25, 28, 33

SHAPE 6324
PAGE 25, 30



SOLID 5031
PAGE 11, 28, 29, 40

SHAPE 5031
PAGE 11, 42



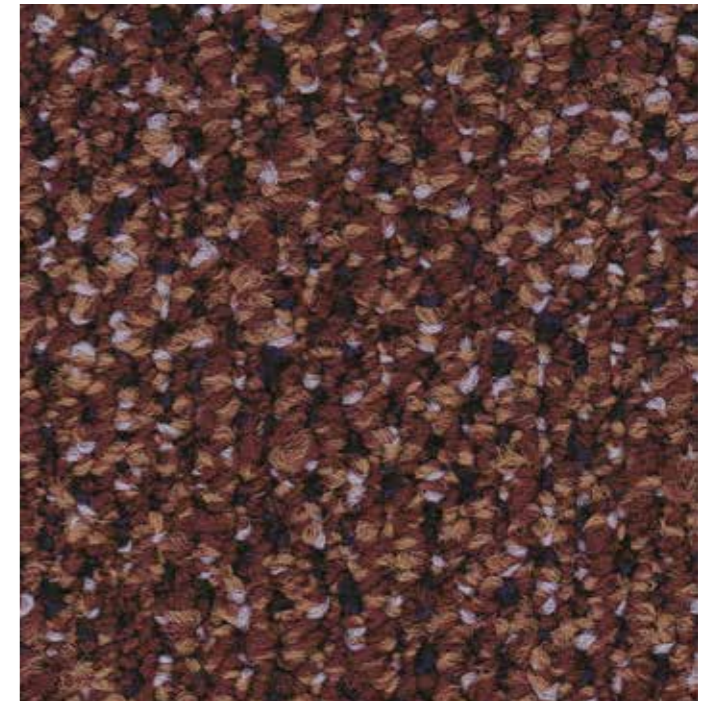
SOLID 1321
PAGE 35, 43

SHAPE 1321
PAGE 14



SOLID 9094
PAGE 40, 42

SHAPE 9094
PAGE 45



SOLID 2962
PAGE 04, 05

SHAPE 2962
PAGE 38, 39, 47

Solid & Shape are a visual exploration of various recycling techniques. The general aesthetics associated with upcycled materials is one of turbid mixed colours and rhythms rather than sharp geometric patterns.

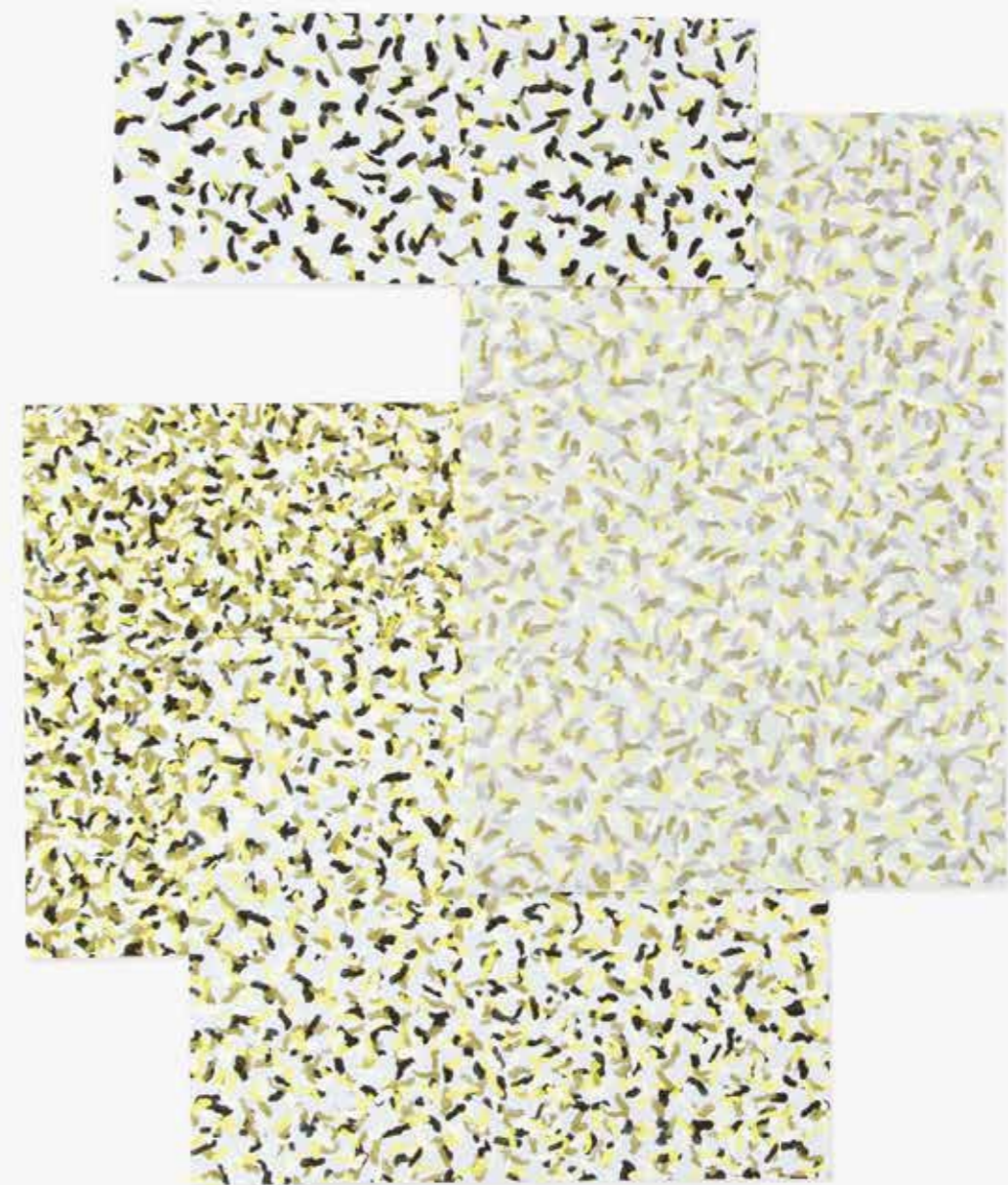
Stefan Scholten: “We wanted to play with blends of rough and smooth yarns and various pile heights, creating a raw and refined look at the same time. The definitive series was preceded by an intensive form research. In the end, a collection with two appearances emerged: **Solid** and **Shape**. Two designs, with eight colours each. By combining the qualities of **Solid** and **Shape**, the possibility of variation increases.”

Solid is a study of yarn combinations and colour combinations inspired by yarn fibres from the recycling process. This study resulted in an all-over design with a luxurious look. The different colours in the melange yarns give a surprisingly colourful impression when examined in detail.

Starting with the same process as for **Solid** – cutting yarn fibres, taking them apart and reconstituting them – Studio Stefan Scholten created a pattern based on organic shapes, like a collage of leftover shapes that create a new picture. By using the same melange yarns as in **Solid**, the two concepts complement one another.

The combination of **Solid** and **Shape** offers the possibility of working with zones. The matching colour palette allows you to make an appropriate and expressive statement on workplace floors.





“We studied the appearance of shredded material - ground, cut, sliced and granulated bits are the starting point for our designs. By layering and combining these fragments, new patterns are created.”
— Stefan Scholten



“No matter how you combine tiles, the colours and patterns always work together. That is the power of Shape. The forms blend organically into each other”
— Stefan Scholten

SHAPE 7854, SHAPE 1321



INSPIRED BY THE RECYCLING PROCESS OF TARKETT

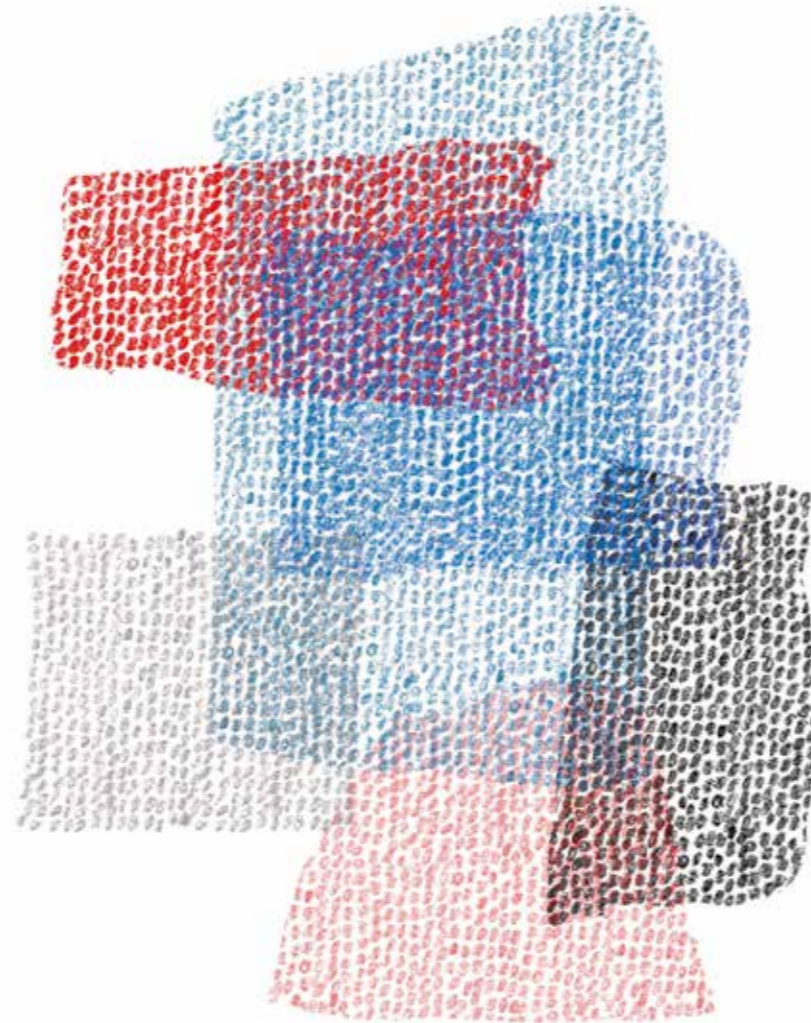


The ReStart take-back and recycling programme facilitates the processing of old flooring as a raw material for new flooring. Tarkett can separate the backing from the yarn and reuse it as backing for new DESSO carpet tiles. The yarns are reprocessed to produce new carpet yarns.

Stefan Scholten: "Our project was based on this process. I was very pleased to have this as a starting point. How do you translate Tarkett's Cradle to Cradle philosophy into a collection that visibly and tangibly reflects it? We wanted the carpet tiles themselves to reflect the fact that they are the result of upcycling, the clever processing of yarn waste." To use the recycled yarns, Studio Stefan Scholten put together a colour line from Tarkett's existing yarn bank.



Stefan Scholten: "We started by sorting fibres by colour: from light to dark, and from warm to cold. This created a melange, a blend of colours. We also started to zoom in on the threads, the filaments that produce a yarn, looking at their shape and ways to combine them to give a new look. The impressions that you collect in your head and as a rendering on paper must then be translated back into an image that the machine with its many needles can also understand."



'Melted Cubes' → Shape

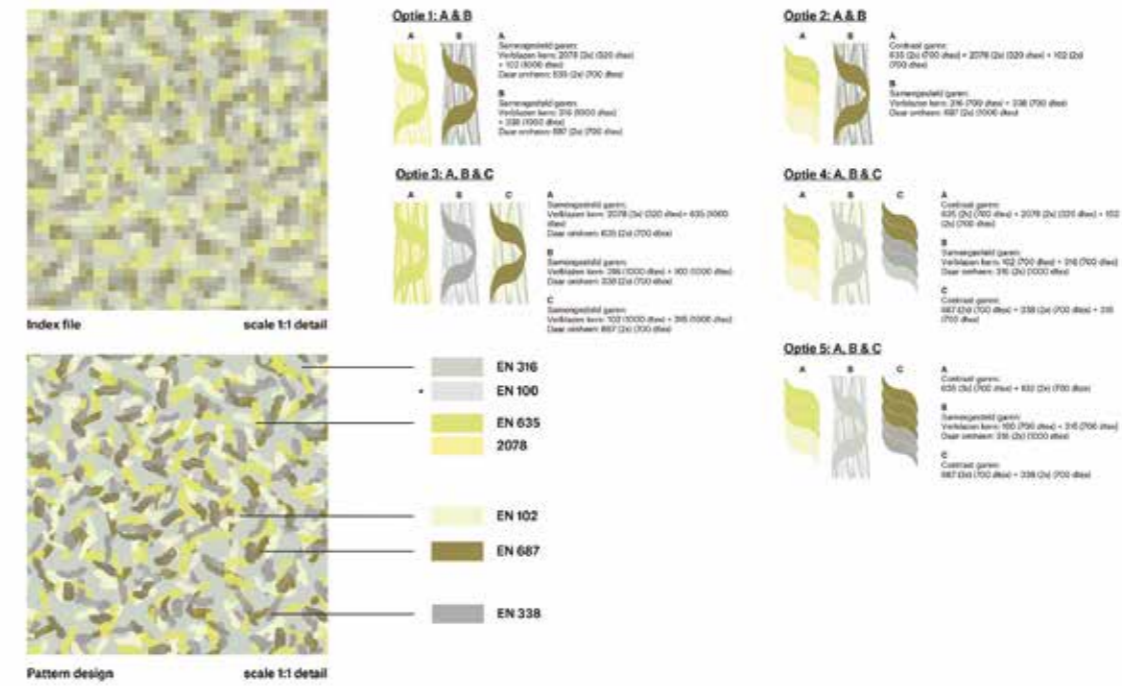


'Flaked Fibers' → Solid

"Our image research mainly focused on shape and colour. How do you stay true to the upcycling principle and carry it through to the end result, the carpet tile?"
 — Stefan Scholten

The working title of the project was 'The Shredder Collection'. The final series was preceded by an intensive study of form. We continued with explorations that had imaginative names such as 'Flaked Fibers', 'Drifting Dots', 'Random Short Cuts' and 'Melted Cubes', to define the main route we wanted to take.





Stefan Scholten: "We twisted the original filament threads to create new shades. You can play with colour, pile height, and the number and combination of threads. The process of composition is a very delicate thing. By the end, it should all work together perfectly. Only then can you be sure of successfully converting a computer image into a combination that works in real life."

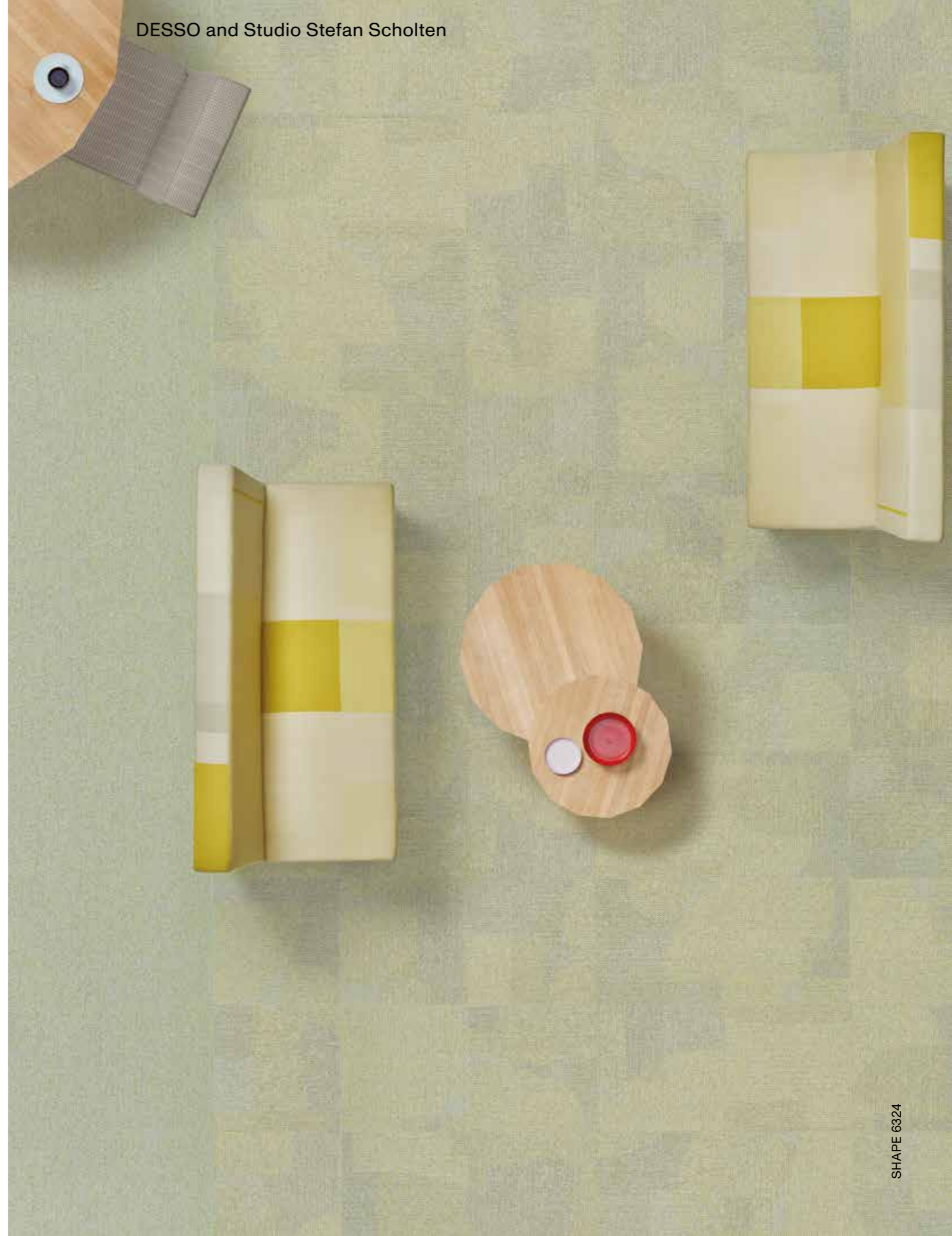


The aim was to develop a new colour image with warm, applicable, melange tones. This became four dark and four lighter colours, all with a fresh feel – deprecating the safe greys.



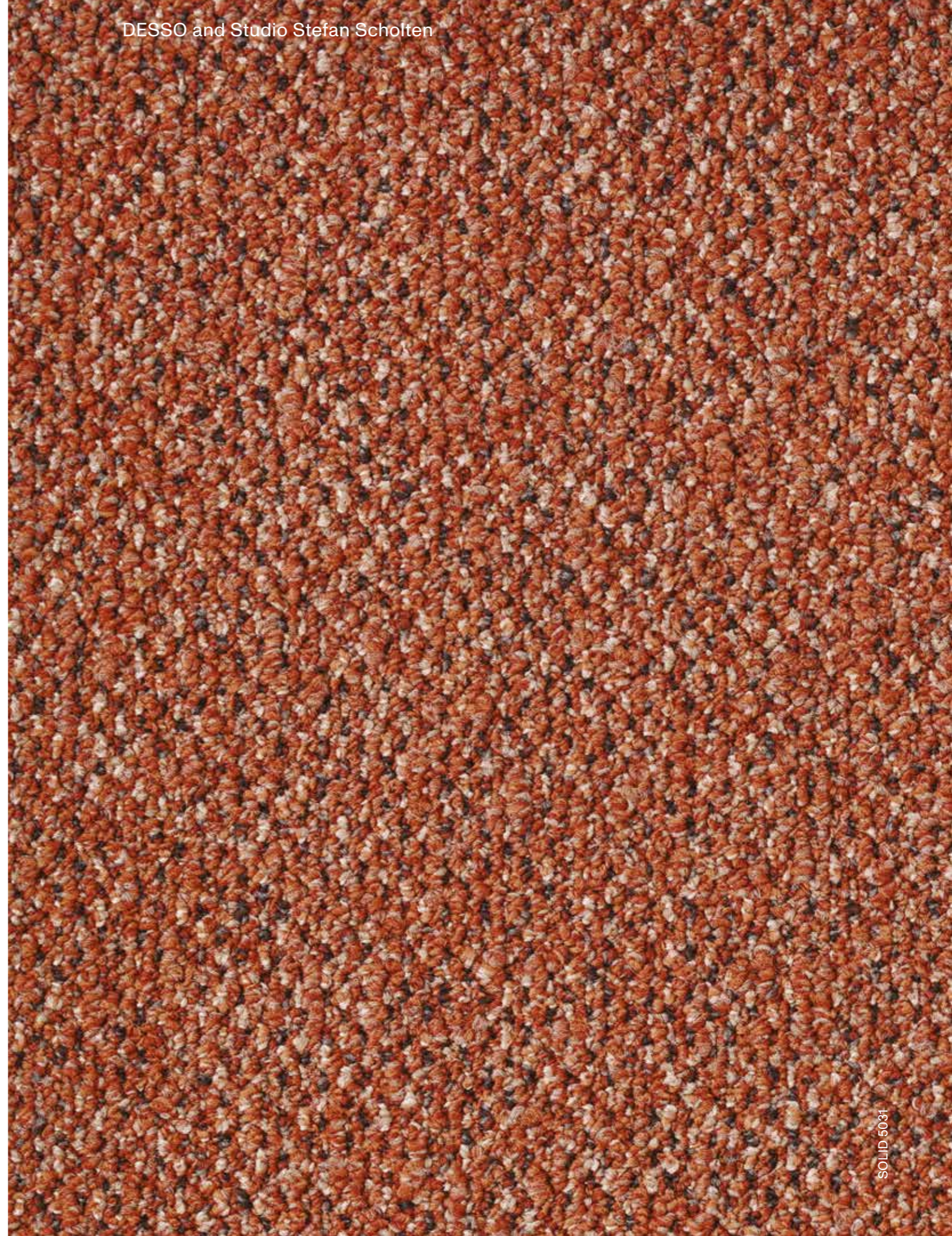
With various design concepts, we produced prototype swatches from which a selection was made for the test floors. Translating a manual swatch into an entire floor is a challenging process. Stefan Scholten: "No matter how straightforward a carpet tile may seem at first glance, the number of variables determining quality is huge. We made numerous test samples."

Ludwig Cammaert: "The cooperation with Studio Stefan Scholten is an example of how you can challenge and support each other. Stefan Scholten is known for a refined use of colour and subtle sense of form and materiality. When you add our in-depth carpet experience, you create the conditions for a collection with added value. Our research and development program goes way beyond just material innovations, such as Ecobase carpet tile backing and the application of recyclable yarns. You won't necessarily see all these developments in the product straightaway. The positive story behind the technology deserves a parallel in the design process. This is only possible if you bring the world of R&D and the world of design together. Studio Stefan Scholten took on that challenge with true conviction."





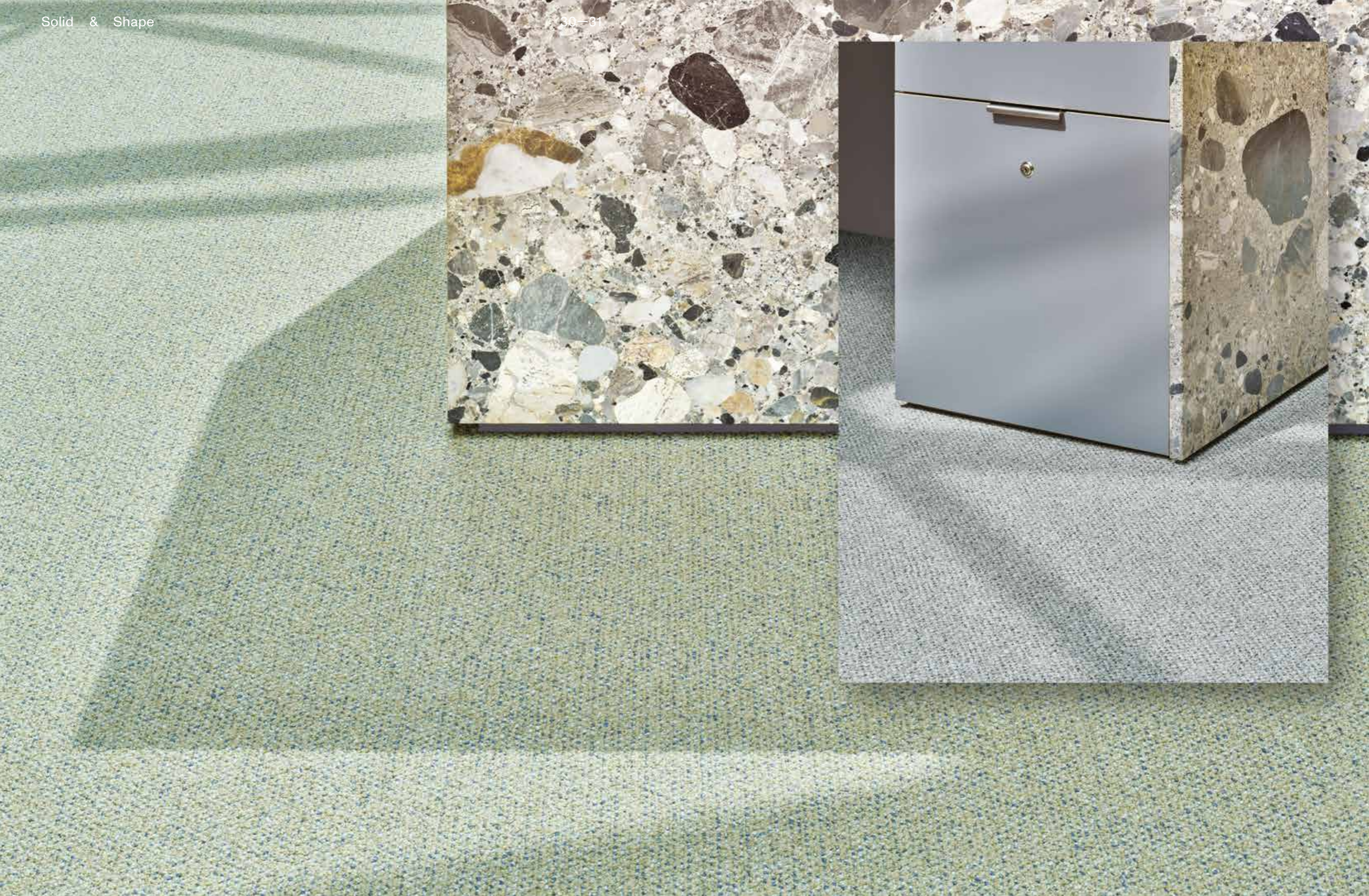
SOLID 6324, SOLID 5031



SOLID 5031

THE
TACTILE NATURE
OF
THE TILES
SET
ALONGSIDE
ARCHITECTURAL
MATERIALS







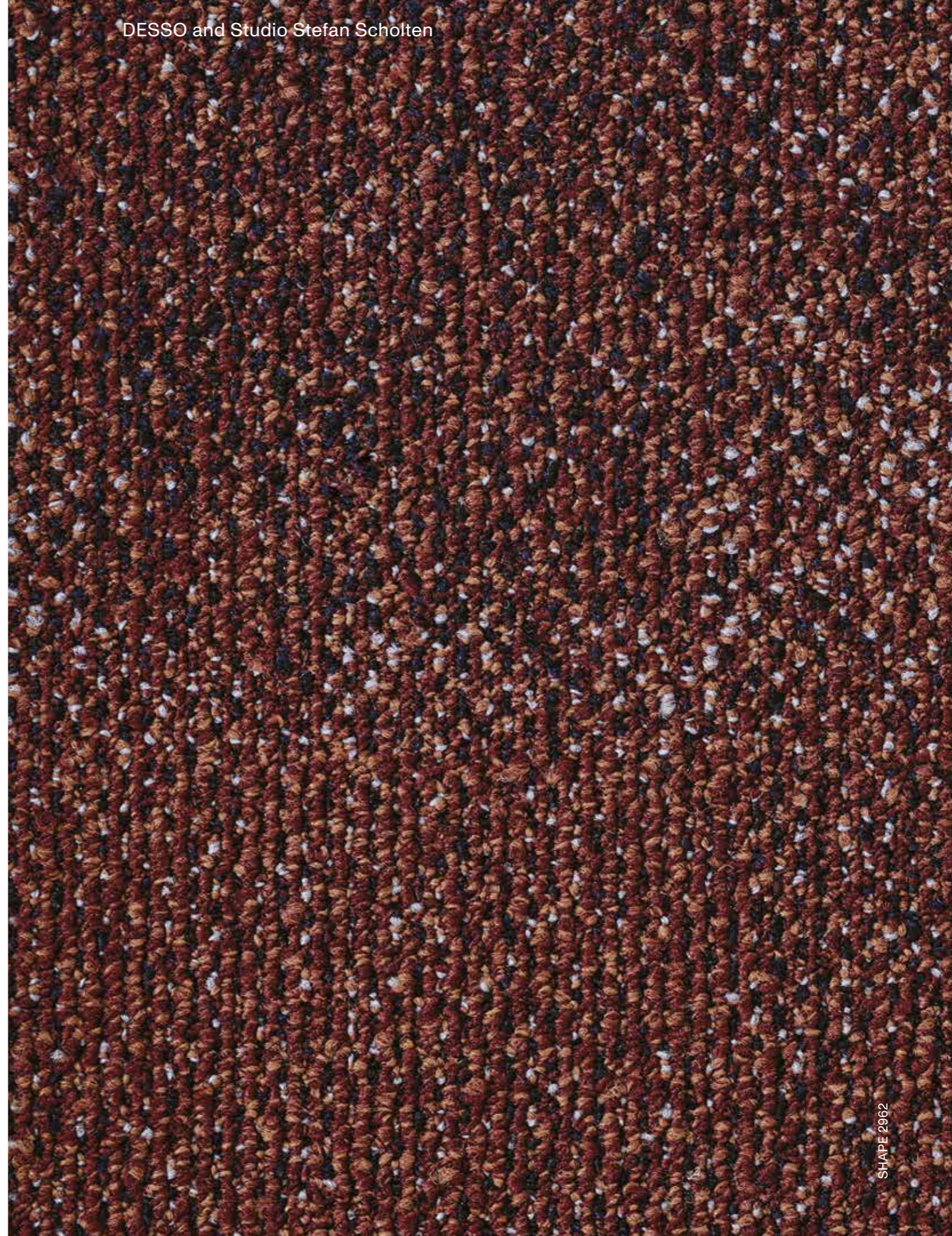






Ludwig Cammaert: "We used 100% regenerated nylon 6 yarn. Post-industrial, post-consumer material from our recycling centre, as well as fishing nets and old clothing material, form the basis for ECONYL® yarn from our supplier Aquafil."

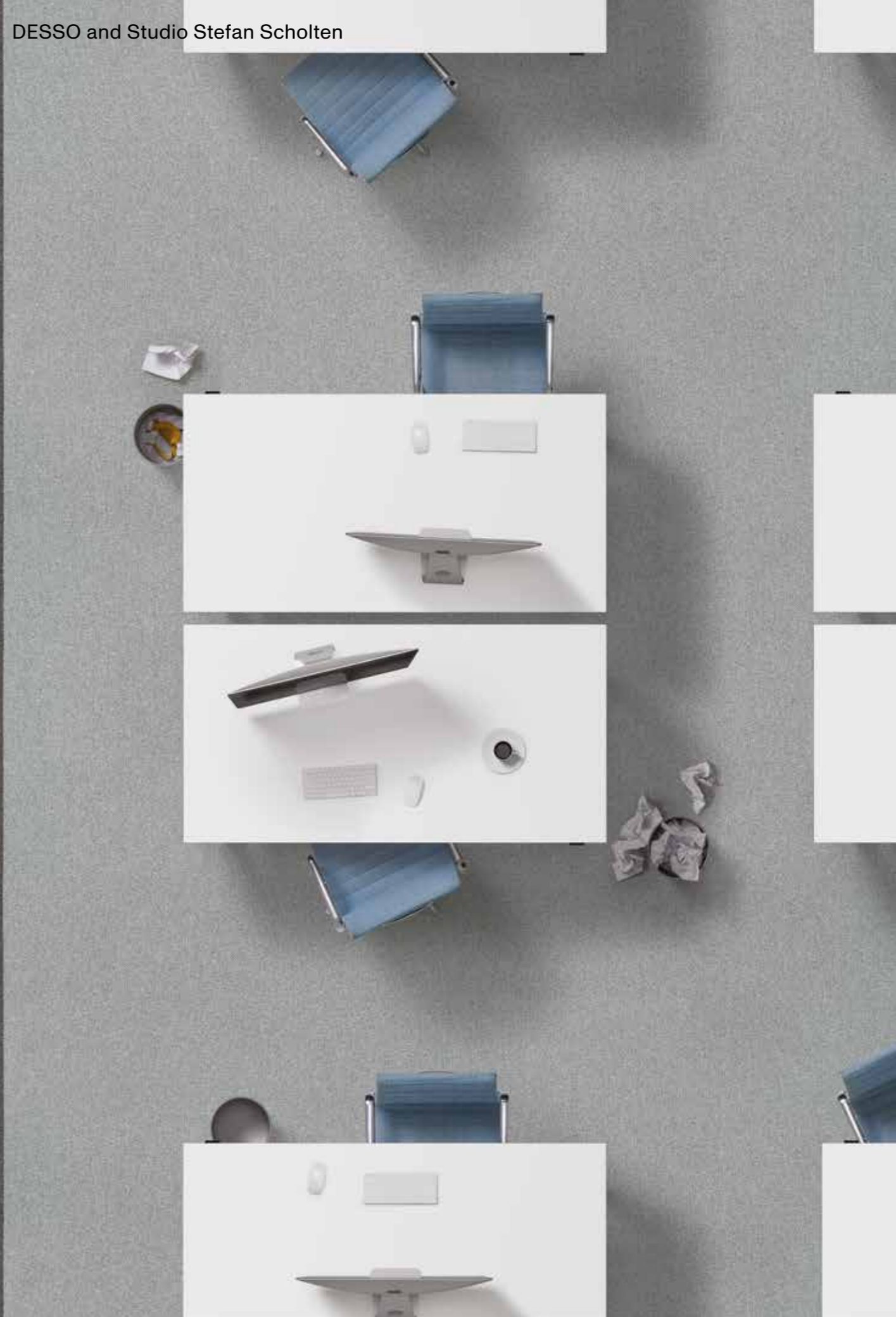






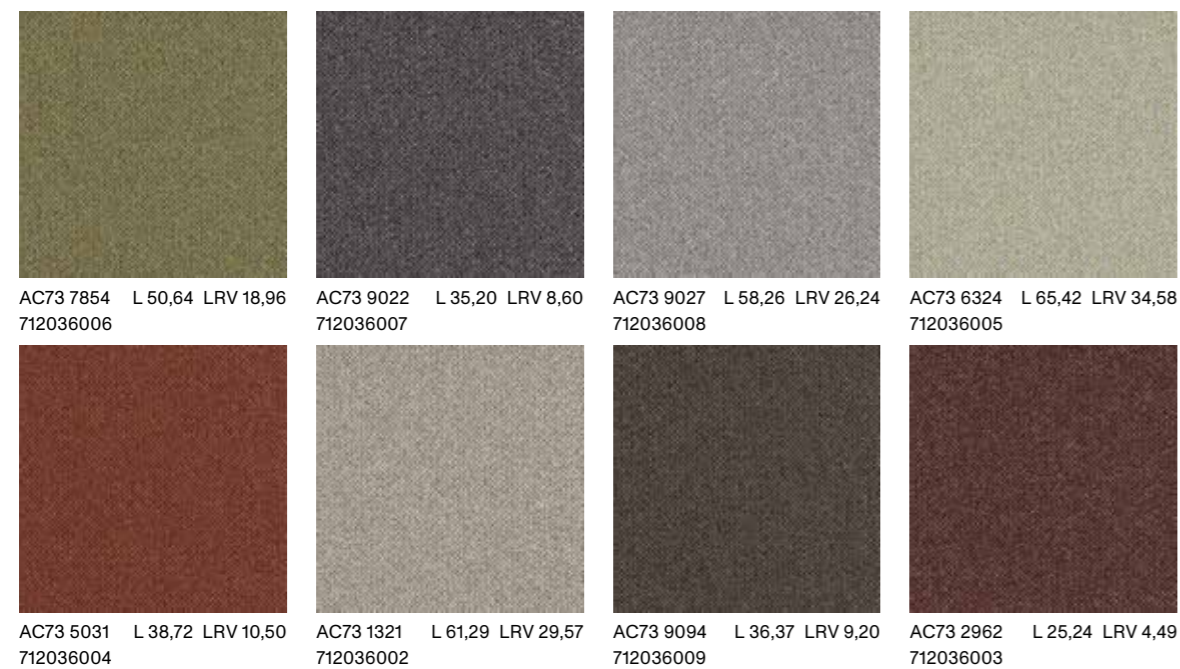
↑ SOLID 9027

↓ SOLID 9022, SOLID 9027

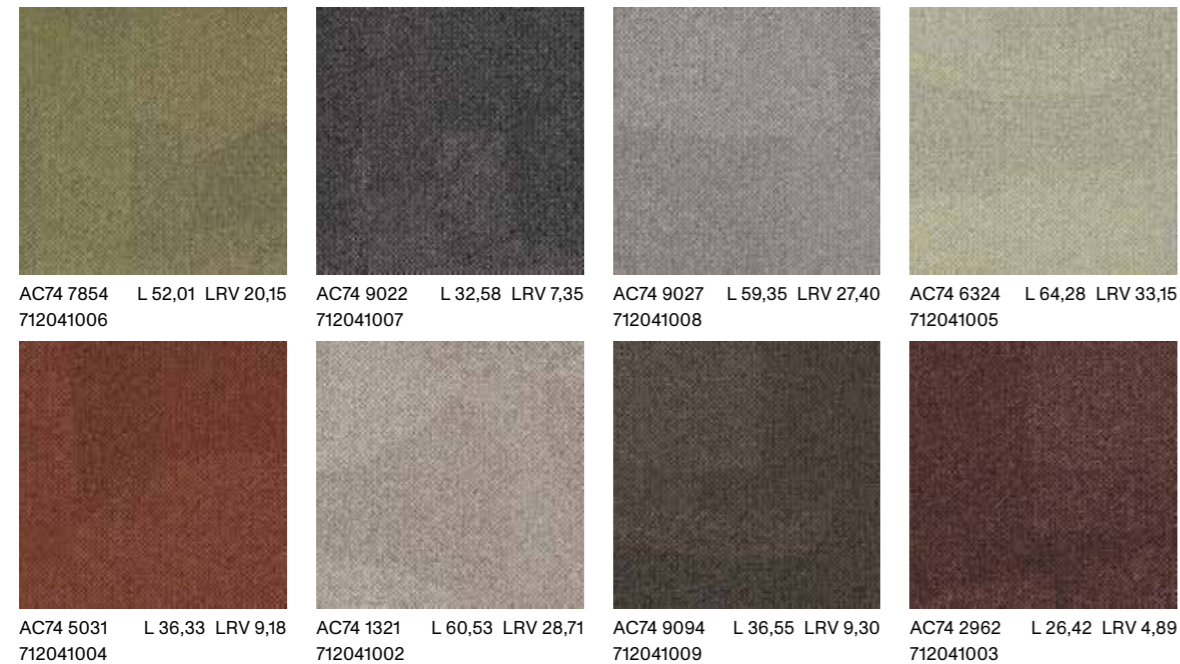




Solid

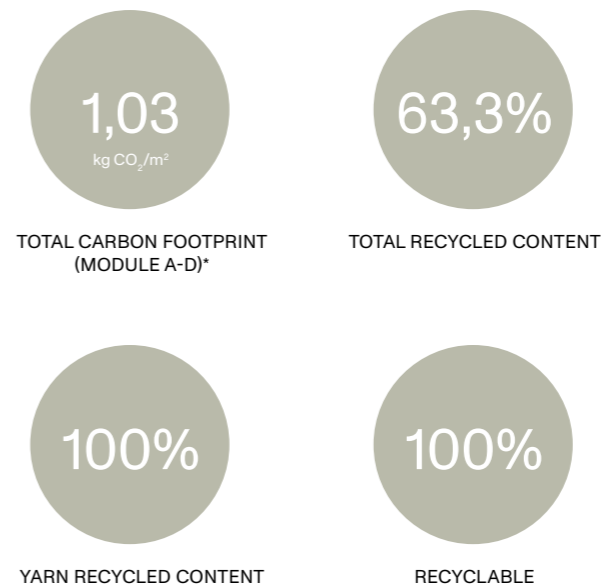


Shape

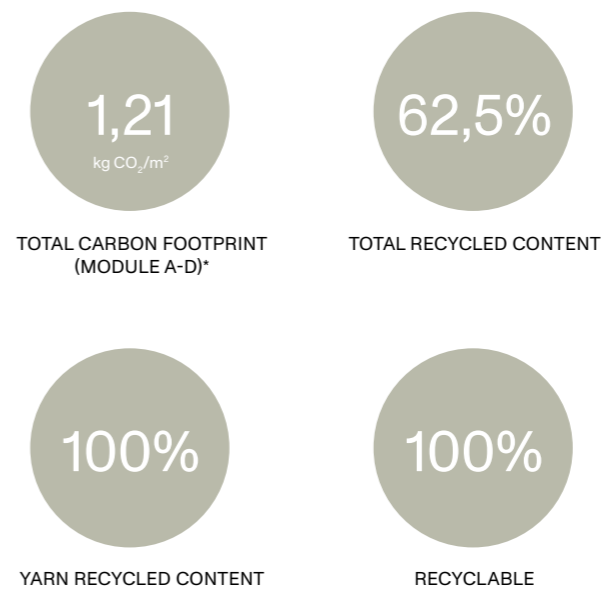


The DESSO and Studio Stefan Scholten collection was made to be remade. A truly circular product, it was designed to be disassembled so its components can be easily recycled into raw material for new carpet tiles. From the initial point of extraction through manufacturing, installation, use and recycling, we bear a responsibility for guiding the carpet on to its next life, over and over again. Our closed-loop system ensures that our DESSO carpet tiles have the lowest circular carbon footprint* in Europe – one that is at least 6 times lower** than the total carbon footprint of our competitors.

Solid



Shape



Sample ordering

Interested in a free sample from the Solid or Shape collection? Please use the QR code, and find out how quickly you can have a sample of your choice delivered.

* For EcoBase-backed carpet tiles with PA6 yarn, according to the Environmental Product Declaration (EPD) S-P-06377 externally verified by Bureau Veritas, based on the total carbon footprint (Modules A-D) with a closed loop circular recycling scenario.

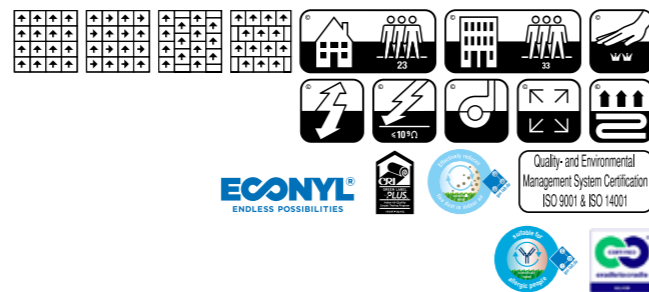
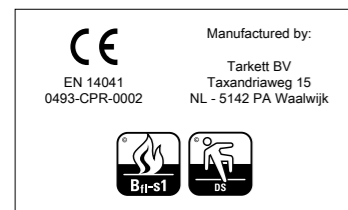
** Comparison of EPD S-P-06377 with the total carbon footprint (Module A-D) of each of the 19 carpet tiles' EPDs available on internet (May 2022) for competitors with production location in the EU+UK, in the product weight range 600-699gr, Polyamide yarn and incineration as end-of-life scenario.

DESSO Textile floor covering - Tiles

Solid EcoBase

Preliminary specification according to EN 1307

Type of manufacture	ISO 2424	Tufted 1/10 "						
Aspect	ISO 2424	Structured loop pile						
Dye method		Solution dyed						
Dimension	EN ISO 24342	cm x cm	50 x 50 / 19,68" x 19,68" (20 tiles per box)					
Primary backing	ISO 2424	Polyester fleece						
Secondary backing	ISO 2424	EcoBase - 100% recyclable, contains on average 80% positively defined recycled content.*						
Pile fibre composition	ISO 2424	BCF Polyamide 6 ECONYL® (ECONYL® is made from 100% regenerated content) **						
Total thickness	ISO 1765	mm	6.5	inch	0.3			
Effective pile thickness	ISO 1766	mm	3.2	inch	0.13			
Total mass	ISO 8543	g/m²	4200	oz/yd²	124.0			
Total pile mass	ISO 2424	g/m²	740	oz/yd²	21.8			
Effective pile mass	ISO 8543	g/m²	470	oz/yd²	13.9			
Pile density	ISO 8543	g/cm³	0.147	lb/in³	0.0053			
Number of tufts	ISO 1763	/dm²	1580	/yd²	132104			
Stroll test	ISO 6356	kV	≤ 2,0					
Vertical resistance	ISO 10965	Ohm	≤ 1 x 10 ⁹					
Horizontal resistance	ISO 10965	Ohm	-					
Use classification	EN 1307	33 Commercial - heavy use						
Luxury rating	EN 1307	LC 2						
Dimensional stability	EN 986	%	≤ 0,2					
Impact sound reduction ΔL _w	ISO 10140	dB	24					
Sound absorption	ISO 354	Freq. Hz	125	250	500	1000	2000	4000
		α _s	0.03	0.02	0.07	0.18	0.35	0.36
Noise reduction	ISO 354	α _w	0.15					
Thermal resistance	ISO 8302	m².K/W	≤ 0,17					
Flammability	EN 13501-1	Bfl - s1 (loose laid tested)						
Prodis - GUT	www.pro-dis.info							



* DESSO EcoBase® is a polyolefin based backing. Positively defined means: all ingredients have been assessed as either Green (optimal) or Yellow (tolerable) according to the Cradle to Cradle® assessment criteria. As described in Cradle to Cradle® Certified CM Product Standard Version 3.1. The total % of recycled content varies per product and per colour which can be found on our website: www.tarkett.com
 For products with acoustic backing: SoundMaster/SoundMaster Lite backings contain 80% recycled polyester felt, SoundMaster Thrive is a low anti-mony polyester felt.
 ** ECONYL® is a yarn made from 100% regenerated content. The total % of regenerated content varies per product and per colour. Whether a colour contains ECONYL® and the exact % thereof can be found on our website: www.tarkett.com

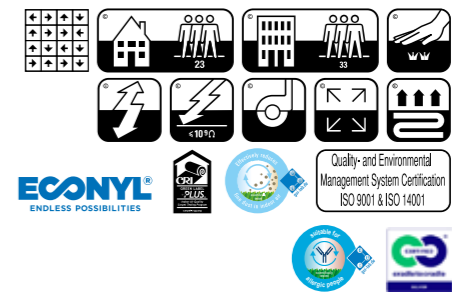
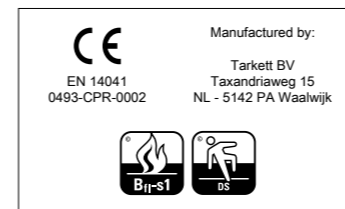
DESSO flooring products are to be installed in full accordance with Tarkett's installation instructions and recognized trade standards. An effective, regular cleaning and maintenance program is vital for retaining a high appearance level. DESSO flooring products should only be used as floorcoverings. Note: Tarkett reserves the right to change this specification without prior notice; changes are subject to normal production tolerances. For the latest versions of the technical specifications, visit www.tarkett.com

DESSO Textile floor covering - Tiles

Shape EcoBase

Preliminary specification according to EN 1307

Type of manufacture	ISO 2424	Tufted 1/10 "						
Aspect	ISO 2424	Structured loop pile						
Dye method		Solution dyed						
Dimension	EN ISO 24342	cm x cm	50 x 50 / 19,68" x 19,68" (20 tiles per box)					
Primary backing	ISO 2424	Polyester fleece						
Secondary backing	ISO 2424	EcoBase - 100% recyclable, contains on average 80% positively defined recycled content.*						
Pile fibre composition	ISO 2424	BCF Polyamide 6 ECONYL® (ECONYL® is made from 100% regenerated content) **						
Total thickness	ISO 1765	mm	6.0	inch	0.2			
Effective pile thickness	ISO 1766	mm	3.0	inch	0.12			
Total mass	ISO 8543	g/m²	4150	oz/yd²	122.5			
Total pile mass	ISO 2424	g/m²	675	oz/yd²	19.9			
Effective pile mass	ISO 8543	g/m²	430	oz/yd²	12.7			
Pile density	ISO 8543	g/cm³	0.143	lb/in³	0.0052			
Number of tufts	ISO 1763	/dm²	1580	/yd²	132104			
Stroll test	ISO 6356	kV	≤ 2,0					
Vertical resistance	ISO 10965	Ohm	≤ 1 x 10 ⁹					
Horizontal resistance	ISO 10965	Ohm	-					
Use classification	EN 1307	33 Commercial - heavy use						
Luxury rating	EN 1307	LC 2						
Dimensional stability	EN 986	%	≤ 0,2					
Impact sound reduction ΔL _w	ISO 10140	dB	24					
Sound absorption	ISO 354	Freq. Hz	125	250	500	1000	2000	4000
		α _s	0.02	0.02	0.06	0.17	0.30	0.36
Noise reduction	ISO 354	α _w	0.15					
Thermal resistance	ISO 8302	m².K/W	≤ 0,17					
Flammability	EN 13501-1	Bfl - s1 (loose laid tested)						
Prodis - GUT	www.pro-dis.info							



* DESSO EcoBase® is a polyolefin based backing. Positively defined means: all ingredients have been assessed as either Green (optimal) or Yellow (tolerable) according to the Cradle to Cradle® assessment criteria. As described in Cradle to Cradle® Certified CM Product Standard Version 3.1. The total % of recycled content varies per product and per colour which can be found on our website: www.tarkett.com
 For products with acoustic backing: SoundMaster/SoundMaster Lite backings contain 80% recycled polyester felt, SoundMaster Thrive is a low anti-mony polyester felt.
 ** ECONYL® is a yarn made from 100% regenerated content. The total % of regenerated content varies per product and per colour. Whether a colour contains ECONYL® and the exact % thereof can be found on our website: www.tarkett.com

DESSO flooring products are to be installed in full accordance with Tarkett's installation instructions and recognized trade standards. An effective, regular cleaning and maintenance program is vital for retaining a high appearance level. DESSO flooring products should only be used as floorcoverings. Note: Tarkett reserves the right to change this specification without prior notice; changes are subject to normal production tolerances. For the latest versions of the technical specifications, visit www.tarkett.com



PAGE 29

SOLID 6324

PAGE 30—31

SOLID 7854, 1321

PAGE 32—33

SHAPE 9027

PAGE 34—35

SHAPE 2962, 9022

PAGE 50

SOLID 5031, 9094

Tarkett Human-Conscious Design® is our pledge to stand with present and future generations. To create flooring and sports surfaces that are good for people and for the planet. And to do it everyday.

We deliver on this through the synergy of three commitments:

1 Deep human understanding

2 Conscious choices. For people and planet

3 With you. Every step of the way

Design Solid & Shape
Studio Stefan Scholten

Graphic design
Studio Stefan Scholten

Art direction
Studio Stefan Scholten

Photography
Pim Top

Text
Jack Meijers

Special thanks to
1616/ Arita Japan, Copray & Scholten, Gelderland, Karimoku
New Standard, Lensvelt, Moroso, Scholten & Baijings and Vitra.
Roamler for photographing (page 33–40) at their office in Amsterdam.



Descriptions, colours and specifications are subject to change without notice. Tarkett is not responsible for typographical/photographical errors. Actual product may differ from illustration.

All rights reserved.
Reproduction in whole or in part is prohibited without the prior written consent of the copyright owner.

The information presented in this document does not form part of any quotation or contract, is believed to be accurate and reliable and may be changed without notice. No liability will be accepted by the publisher for any consequence of its use. Publication thereof does not convey nor imply any license under patent- or other industrial or intellectual property rights. In case of doubt or differences of interpretation, the English version shall prevail over all other language versions.

Tarkett B.V.
Taxandriaweg 15
5142 PA Waalwijk
The Netherlands

+31 (0)416 684100
deso@tarkett.com
www.tarkett.com

Studio Stefan Scholten
Ruysdaelkade 2
1072 AG Amsterdam
The Netherlands

+31 (0)20 4208940
studio@stefanscholten.com
www.stefanscholten.com

